

ENVIRONMENTAL CLEARANCE COMPLIANCE STATUS REPORT

APRIL TO SEPT 2024

JSW STEEL LTD, DOLVI WORKS

Six Monthly Compliance, Status report

Expansion of Integrated Steel Plant from 5 to 10 MTPA and Power Plant from 300 MW to 600 MW (Gas Based) of M/s JSW Steel Limited at Geethapuram, Village Dolvi, Tehsil Pen, District Raigarh in Maharashtra.

Environmental Clearance Letter No J-11011/176/2013-IA-II(I) dated 25/08/2015 amendment dated 23/01/2018

ENVIRONMENTAL MANAGEMENT DEPARTMENT

JSW STEEL LTD, DOLVI WORKS, TALUKA PEN, RAIGAD-DISTRICT, MAHARASHTRA 402107

Point-wise Compliance Reports of Environment Clearance

Expansion of Integrated Steel Plant from 5 to 10 MTPA and Power Plant from 300 MW to 600 MW (Gas Based) of M/s JSW Steel Limited at Geethapuram, Village Dolvi, Tehsil Pen, District Raigarh in Maharashtra. (Letter No J-11011/176/2013-IA-II(I) dated 25/08/2015 amendment dated 23/01/2018

Sr. No.	Condition	Compliance Status
1	This has reference to your letter no Nil dated 6 th February 2015 along with copies of EIA/EMP report seeking Environmental Clearance under provisions of the EIA Notification 2006 for the project mentioned above. The ToR to the project was awarded by MoEF&CC vide letter dated 28 th May 2013 for preparation of EIA/EMP report. The proposed project activity is listed at Sr. No 3(a) in primary metallurgical industry under Category "A" of the Schedule of EIA Notification 2006 and appraised by the Expert Appraisal Committee (Industry).	Noted
2	The Ministry of Environment, Forests and Climate Change (MoEF&CC) has examined your application of EC for the aforesaid project. It is noted that M/s JSW Steel Limited (JSWSL) proposes to expand the integrated steel plant to 10.0 MTPA from existing 5.0 MTPA at Geethapuram, Dolvi in Raigad District of Maharashtra. The existing steel plant is based on the Direct Reduced Iron (DRI)- Blast Furnace- CONARC-Ladle Furnace and VD/VOD- Continuous Casting- Rolling Mill (CSP) Route. The expansion would be based on proven BF- BOF Route. Expansion of 3.0 MTPA Steel Plant to 5.0	Noted

Sr. No.	Condition	Compliance Status
	<p>MTPA and 300 MW Captive Power Plant is under implementation. The Site falls between Longitude- 73° 00' 00"- 73° 05' 00" E, Latitude 18° 39' 00" - 18° 45' 00" N. Lnad comprises Dolvi, Jui Bapuji & Khar Karavi Village. Pen is the nearest railway station at about 8 Km (aerial distance) on the Konkan Railway line connecting Mumbai- Mangalore along the West Coast of India. The nearest Airport is Mumbai (National and International) located about 80 Km in North direction from the proposed project site. The Company has about 1200 acres of land in its possession for its existing operating integrated steel plant complex of 5.0 MTPA capacity. Some of the proposed additional capacities are proposed to be setup within the existing plant and some need relocated acquiring additional 600 acre of land. There is no national park, biosphere reserve, sanctuary, habitat of migratory bird, archaeological site, defence installation, etc. within 10 Km of the periphery of the plant boundary. The total project cost is estimated to be Rs. 17000 Cr. The CSR Budget is Rs. 225 Cr. For 5 MTPA project and Rs. 425 Cr for 10 MTPA project. The requirement of total manpower for the proposed expansion project will be about 5000. However, the proposed Integrated Steel plant will additionally generate more than 15000 indirect secondary and tertiary employments.</p>	

Sr. No.	Condition					Compliance Status		
3	The production facilities after the expansion are given below: (Expansion of JSWSL (existing 5 MTPA to 10 MTPA))					Complied. Part of the project is under implementation.		
	S. No	Technological Facility	EC accorded for Facilities under 5 MTPA	EC accorded for	Total unit capacities at 10 MTPA	S. No	Technological Facility	Status of Implementation
	1.	DR1 (Gas based Mega Module)	2.0 MTPA (by augmentation)	2.0 MTPA	4.0 MTPA	1.	DR1 (Gas based Mega Module)	- 2 MTPA plant in operation & - 2 MTPA plant under technology finalization.
	2.	Pellet Plant	4.0 MTPA	4.0 MTPA	8.0 MTPA	2.	Pellet Plant	- commissioned and in operation. (Vide amendment of EC in 2020, total capacity of Pellet Plant is 13 MTPA)
	3.	Coke Ovens including By-product plant	2.0 MTPA	2.5 MTPA	4.5 MTPA	3.	Coke Ovens including By-product plant	3 MTPA Capacity commissioned (Vide amendment and EC transfer dtd 22 nd Nov 2021, 3.5 MTPA Coke Oven Including by product plants is transferred to JSW Steel Ltd., out of which 3 MTPA plant is commissioned.)
	4.	Sinter Plant	2.8+3.2 MTPA	8.0 MTPA	14.0 MTPA	4.	Sinter Plant	2.8+2.5 MTPA plants operational, balance capacity to be implemented (Vide amendment of EC in 2020, total capacity of Sinter Plant is 10 MTPA)
	5.	Blast Furnace including Pig casting	3.6 MTPA (by augmentation)	4.5 MTPA	8.1 MTPA	5.	Blast Furnace including Pig casting	8.0 MTPA capacity implemented.
	6.	SMS (CONARC)	5.2 MTPA (by	--	5.2 MTPA	6.	SMS (CONARC)	5.2 MTPA capacity implemented.
	7.	SMS -BOF	--	6.0 MTPA	6.0 MTPA	7.	SMS -BOF	6.0 MTPA Commissioned
	8.	Ladle Furnace (LF)	2x200t +205t	2X300t	2x200t +205t 2x300t			
	9.	VD/VOD & RH-TP	1x200t+1x205t	2x300t	1x200t +1x205t 2x300t			
	10.	CSP(HRC Coil) Thin Caster-cum-Hot Strip Finishing Train	3.5 MTPA (By Augmenting)	-	3.5 MTPA			
	11.	Conventional Slab Caster	2x1 strands (3.68 MTPA)	2x2 strands	Total 6 strands (9.4 MTPA)			
	12.	Billet Caster	-	1x6 Strands	6 strands (1.5 MTPA)			
13.	Plate Mill	1.5 MTPA	-	1.5 MTPA				

Sr. No.	Condition					Compliance Status		
	14.	CRM (Hot Rolled Skin Pass + Cold Rolled Full Hard Coil + Hot Rolled Pickled & Oiled Coil)	1.0 MTPA	1.5 MTPA	2.5 MTPA	8.	Ladle Furnace (LF)	Commissioned
	15.	Galvanizing Line (Cold Rolled Steel Strips, Hot Dip Zinc Coated Full Hard)	0.6 MTPA	-	0.6 MTPA	9.	VD/VOD & RH-TP	- 1x200t+1x205t in operation - 1x200t +1x205t 2x300t to be implemented.
	16.	Electrical Steel CRGO line	0.4 MTPA	-	0.4 MTPA	10.	CSP(HRC Coil) Thin Caster-cum-Hot Strip Finishing Train	Commissioned
	17.	Tin Plate Mill	0.4 MTPA	-	0.4 MTPA	11.	Conventional Slab Caster	Commissioned
	18.	Colour Coating Plant	0.5 MTPA	-	0.5 MTPA	12.	Billet Caster	Commissioned
	19.	Lime/Dolo Plant	1800 TPD	1800 TPD	3600 TPD	13.	Plate Mill	To be implemented
	20.	Oxygen Plant	4100 TPD	3500 TPD	7600 TPD	14.	CRM (Hot Rolled Skin Pass + Cold Rolled Full Hard Coil + Hot Rolled Pickled & Oiled Coil)	To be implemented
	21.	Hot Rolling Mill with shearing & slitting line	-	5.0 MTPA	5.0 MTPA	15.	Galvanizing Line (Cold Rolled Steel Strips, Hot Dip Zinc Coated Full Hard)	To be implemented
	22.	Bar Mill	-	1.4 MTPA	1.4 MTPA	16.	Electrical Steel CRGO line	To be implemented
	23.	Slag & Clinker Grinding Unit	"	10 MTPA	10 MTPA	17.	Tin Plate Mill	To be implemented
	24.	Captive Power Plant	300 MW	300 MW	600 MW (based on surplus gases of BF & Coke)	18.	Colour Coating Plant	To be implemented
	25.	Township	-	150 acres	150 acres			

Sr. No.	Condition	Compliance Status		
		19.	Lime/Dolo Plant	Commissioned
		20.	Oxygen Plant	Commissioned
		21.	Hot Rolling Mill with shearing & slitting line	Commissioned
		22.	Bar Mill	Commissioned
		23.	Slag & Clinker Grinding Unit	Implemented, EC transferred to JSW Cement Ltd.
		24.	Captive Power Plant	Commissioned
		25.	Township	To be implemented
4	<p>The total water requirement for the 10 MTPA steel plant, 600 MW power plant and township will be about 116 MLD. At present JSW ISPAT Steel Ltd. Dolvi Works has been allocated about 56 MLD water from River Amba, Nagothane, K.T. Bandhara and consent for 30 MLD has been obtained. Application is in progress for the balance amount. M/s JSW has permission for drawl of 53.66 MLD from irrigation department, Govt. of Maharashtra. Water drawl from River Amba sanctioned. Permission for additional 65 MLD water is under consideration of Govt. of Maharashtra. It was further stated that the region received heavy rainfall of about 3000 mm annually and surplus water is available in the Dam.</p>	<p>Agreement with Irrigation department, Raigad, GOM for total 160.84 MLD has been executed, copy enclosed as Annexure-1.</p> <p>Hence the condition has been complied</p>		
5	<p>The wastewater generated from indirect cooling circuit would be routed through the cooling tower and pressure filter for recycling purpose. The wastewater generated from the coke ovens will be treated in a bio-oxidation plant to reduce the level of phenolic</p>	<p>Complied.</p> <p>Indirect cooling circuit is routed through cooling tower and pressure filter. Details of Pressure filter and photograph enclosed as Annexure-2(a).</p>		

Sr. No.	Condition	Compliance Status
	<p>compounds, oil & grease and cyanide. The treated wastewater will be reused in the system. The wastewater of gas cleaning plants of blast furnace and steel melt shop containing suspended solids will be clarified in the wastewater treatment plant. The clarified water will be recycled to the waste gas cleaning units. Similarly, the wastewater coming out from the continuous casting machine will be treated to remove scale and oil and the treated water will be recycled after cooling. The plant sanitary wastewater will be treated in sewage treatment plant and the treated water will be used for dust suppression and maintenance of plant green belt.</p>	<p>Wastewater generated from the coke ovens is treated in a bio-oxidation and De-phenolisation plant to meet the treatment standards. Photograph of BOD Plant are attached as Annexure-2(b)</p> <p>Hence the condition has been complied</p>
6	<p>De-dusting system with bag filters at all dust generating locations in all the units have been installed to control dust emission as well as in the BF cast house and SMS and dust emission levels at work zone are within prescribed limit. For the expansion project (5 MTPA), which is under various stages, secondary fugitive dust emission system will be installed at the BF cast house, SMS and all other units.</p>	<p>Complied</p> <p>All necessary air pollution control devices provided:</p> <ul style="list-style-type: none"> • Stack of adequate height & diameter with continuous stack monitoring facilities for all the stacks are provided, 46 nos of stacks are connected through OCEMS to CPCB and MPCB. • ESP (17nos) and Bag Filters (157nos), Cyclone & Venturi Scrubber (06 nos), Dry Cyclone separator (01 no) are provided to control the PM emission from stacks within norm. • Raw Material handling area, yard sprinklers, dry fog system, Dust extraction systems provided to control the fugitive emissions. Constructed covered sheds for Raw Material storage purpose. • Covered shed for Jetty yard-A with a capacity of 110,000MT for Coal Storage • Covered shed for Jetty yard-B with a total capacity of 305,000 MT for Iron Ore and Flux.

Sr. No.	Condition	Compliance Status
		<ul style="list-style-type: none"> • Covered Sheds (2 Nos) for Pellet and Coke Storage of Capacity- 1,20,000 MT each. • Covered shed for storing Iron Ore Bearing Material and Flux of Capacity 4,27,000 MT <p>Environmental Benefits of Covered Shed:</p> <ul style="list-style-type: none"> • No fugitive emission during handling of material • No water contamination during rains • No spillage of material on roads • Covered storage shed prevents dust emission in the environment during operation of the yard. • Total expenditure on covered shed will Rs 320 Crores • Investment on Yard sprinklers, De-dusting system and Dry fogging system Rs 77.29 Crores • Energy efficient technologies provided in the Plant like waste heat recovery system, Top gas recovery turbine from Blast furnace and Gas Based power plant. • All internal roads are made by concrete. • Regular operation of Road Sweeping machines and water sprinkler on road. • Transfer of De-dusting system dusts and other secondary dusts generated from Pollution Control equipment by bulkers. • The transfer of raw material from Jetty to plant is 100 % through belt and pipe conveyors thereby eliminating any chances of fugitive emission through transportation of material from outside plant to the raw material yard there by improving the Ambient Air

Sr. No.	Condition	Compliance Status
		Quality. Hence the condition has been complied
7	Public hearing was conducted on 28.01.20214 at Pen Education Society's Jaikisan Vidya Mandir and Higher Medium School at Wadkhal, Taluka Pen, Dist Raigad, Maharashtra. The issue raised during the public hearing inter alia include measures for pollution control, information on gas holder installed in the project, infrastructure development for water supply in the neighbouring areas, repair of roads, road traffic, development of fishing activity, repair of kharland bund, arrangement for village candidates sent for training in Bellary, more employment generation for the local etc.	Complied.
8	The matter was considered in the 31 st meeting held on 8 th - 9 th January, 2015 when it was decided to visit the site. Accordingly, site visit was conducted on 9 th March 2015 by sub-committee. Based on the site visit report of the sub-committee and its recommendation the proposal was further considered by the Expert Appraisal Committee (Industry) during its 35 th meeting held on 26 th 27 th March 2015 and recommended the project for environmental clearance subject to stipulation of the following specific conditions and other mitigative measures and conditions for environmental protection:	Noted
9	The Ministry of Environment, Forests and Climate Change (MoEF&CC) on the basis of the aforesaid recommendations of the EAC (I), hereby decided to grant Environmental Clearance to the	Noted.

Sr. No.	Condition	Compliance Status
	project under the provisions of EIA Notification dated 14 th September 2006, subject to strict compliance of the following Specific and General conditions:	
A	Specific Conditions	
i	The project proponent should install 24x7 air and water monitoring devices to monitor air emission and effluent discharge, as provided by CPCB and submit report to Ministry and its Regional Office.	<p>Complying with</p> <ul style="list-style-type: none"> Continuous Emission Monitoring System is installed at 46 Nos stack & connected to MPCB & CPCB for transmission of data online on real time basis, Photo of screen of CEMS is attached as Annexure-3. Information submitted to Regional Office of MoEF&CC along with six monthly compliance. <p>Hence the condition has been complied.</p>
ii	The PP should ensure treatment of effluent particularly from Blast Furnace (BF) and Coke Oven plant. The plant should be designed to meet the cyanide standards stipulated by MoEF&CC under EPA Act 1986.	<p>Complied.</p> <p>Effluent from Coke oven plants is being treated in Biological and De-phenolization Plants (BOD) for treatment of effluent as per standard. Effluent Treatment Plant (ETP) for effluent from gas cleaning plant of BF-1 is provided and for BF-2 the gas cleaning system is dry type, Hence, no effluent from gas cleaning of BF-2 generated. Photographs of Effluent Treatment Plants of Coke Oven Plants along with analysis report of treated effluent and ETP of Blast Furnace 1 is enclosed as Annexure-4.</p>
iii	The commitment made by the PP for plantation of the green belt to the tune of 655 acres should be expedited. Three rows of green belt, 12-15 meters wide, all along the periphery of the plant should be planted.	<p>As per the EC further amended on 06.06.2020, green belt shall be developed in an area of 16% of project area within the project site and 33% of Project area within the 10 km of study area.</p> <p>The copy of the MoM of 4th EAC meeting dated 26th February 2016 is</p>

Sr. No.	Condition	Compliance Status
		<p>attached in Annexure 7</p> <p>Green Belt within Plant:</p> <p>Presently, 13% green belt is developed over 80.00 ha land within the plant premises with 2,17,457 nos of trees.</p> <p>Balance 18.42 Ha (3%) green belt area is to being developed with 46,200 nos of trees. Green belt developed with tree density 2500 trees/hectare and local species.</p> <p>Green Belt Outside Plant in 10 Km area:</p> <p>Green belt outside the plant premises has been developed over 1137 Acres i.e. 74.8% against the EC condition of 33%.</p> <p>Green belt outside the plant premises is developed in forest land in proximity of the plant area in consultation with local forest department over 125 Acre land and Mangrove Plantation over 1012 Acre.</p> <p>The Green Belt Photos are attached in Annexure 5</p>
iv	<p>The CSR plan as submitted by the PP in the area of health care, rural infrastructure development, education, sports and cultural activity, Swachh Bharat Abhiyan with respect to the earlier projects and the ongoing project at Dolvi site are very slow in implementation. The CSR activities should be implemented expeditiously and simultaneously with the implementation of the project, and annual report on CSR activity should be submitted to</p>	<p>Complied with</p> <p>JSW foundation is the apex organization which is responsible for implementation of CSR activity in and around Dolvi works. JSW foundation is supported by JSW Steel Limited.</p> <p>CSR activities in various sectors are being done in the surrounding villages and a time bound action plan for various CSR activities have been submitted to MoEF&CC as per EAC recommendation of 2.5% of</p>

Sr. No.	Condition	Compliance Status
	the Ministry.	<p>project cost.</p> <p>The project proponent has spent Rs 13.42 Crores under CSR activity for 2023-24 (April to March 2024)</p> <p>The above amount has been spent on Social Development- (Education & Training), Skill Development, Water and Sanitization, Agriculture, Rural Development, Health, Solid Wastes Management and Community Development.</p>
v	<p>At least 5 % of the total cost of the project should be earmarked towards the Enterprise Social Commitment (ESC) based on local needs. The proponent should prepare a detailed CSR Plan for every next 5 years for the existing-cum-expansion project, which includes village-wise, sector- wise (Health, Education, Sanitation, Health, Skill Development and infrastructure requirements such as strengthening of village roads, avenue plantation, etc) activities in consultation with the local communities and administration. The CSR Plan will include the amount of 2% retain annual profits as provided for in Clause 135 of the Companies Act, 2013 which provides for 2% of the average net profits of previous 3 years towards CSR activities for life of the project. A separate budget head should be created and the annual capital and revenue expenditure on various activities of the Plan should be submitted as part of the Compliance Report to RO, at Bhopal. The details of the CSR Plan should also be uploaded on the company website and should also be provided in the Annual Report of the company.</p>	<p>The project proponent is carrying out CSR activities in various sectors are being done in the surrounding villages and a time bound action plan for various CSR activities have been submitted to MoEF&CC as per EAC recommendation of 2.5% of project cost.</p> <p>The CER activities shall be implemented in accordance with Ministry's OM vide F.No.22 -65/2017-IA III dated 1st May 2018 within the Project implementation period. A separate budget is incurred under CER activities, which are included in the Budget proposal. copy enclosed as Annexure 6.</p> <p>Amount spent on CER Activities is Rs 119.86 Crores.</p> <p>The above amount was spent on for construction of Multi-Speciality Hospital, Construction of Roads outside the plant premises, and expenditure on Tree plantation in nearby villages (outside the Plant).</p> <p>Hence the condition has been complied</p>

Sr. No.	Condition	Compliance Status
vi	No development should be done on the creek-ward side of the land. Land area between HTL to 100 mts or width of the creek, whichever is less, on the landward side should be kept free from any type of development.	<p>Complied.</p> <p>The project proponent has restricted Development of plant beyond 100 mtrs from HTL & kept the same free. The same was confirmed through Survey was carried out by IRS, Chennai.</p>
vii	Full utilization of slag both BF and SMS should be implemented. The details should be submitted along with 6 monthly compliance reports.	<p>Slag from BF and SMS is used in Cement Plant, land reclamation, Sinter plant and briquette making. Presently, utilization achieved is approx. 98% due to various constraints at user of slags.</p> <p>To further achieve 100% utilization of slag and strengthen the utilization, following activities are undertaken-</p> <ol style="list-style-type: none"> 1) Study conducted by Central Road & Research Institute (CRRI) for Construction of Concrete road by using Steel Slag (EAF Slag) as aggregates. 2) Study conducted by Central Road & Research Institute (CRRI) for Construction of Tetrapod using EAF slag for Marine Application 3) Desk and Wave Flume study for utilization of Steel Slag (EAF Slag) in Marine Application by CSIR –CWPRS. <p>Details of utilization of slag are submitted to regional Office of MOEF&CC with six monthly compliance.</p>
viii	No waste water will be discharged outside the plant boundary during normal operation. In case it become necessary to discharge effluent meeting norms fit to the marine environment, permission of the relevant authority should be obtained.	<p>Complied.</p> <p>Excess treated effluent conforming to standards is being discharged to Amba River Estuary as per the permission obtained from MoEFCC – CRZ Division vide letter No F.No.11-7/2023-IA. III dated 5th April 2023, copy enclosed as Annexure-9</p> <p>The permission is granted for discharge of treated water 615 M3/Hr.</p>

Sr. No.	Condition	Compliance Status
ix	No untreated effluent should be reused for any process.	<p>Complied.</p> <p>Wastewater is treated in ETP and treated effluent is reused industrial usage.</p>
x	Measures should be taken to reduce PM levels in the ambient air. Stack of adequate height & diameter with continuous stack monitoring facilities for all the stacks should be provided and sufficient air pollution control devices viz. Electrostatic precipitator (ESP), bag house, bag filters etc. should be provided to keep the emission levels below 50mg/Nm ³ and installing energy efficient technologies in the Plant	<p>Complied</p> <p>All necessary air pollution control devices provided:</p> <ul style="list-style-type: none"> • Stack of adequate height & diameter with continuous stack monitoring facilities for all the stacks are provided, 46 nos of stacks are connected through OCEMS to CPCB and MPCB. • ESP (17nos) and Bag Filters (157nos), Cyclone & Venturi Scrubber (06 nos), Dry Cyclone separator (01 no) are provided to control the PM emission from stacks within norm. • Raw Material handling area, yard sprinklers, dry fog system, Dust extraction systems provided to control the fugitive emissions. Constructed covered sheds for Raw Material storage purpose. • Covered shed for Jetty yard-A with a capacity of 110,000MT for Coal Storage • Covered shed for Jetty yard-B with a total capacity of 305,000 MT for Iron Ore and Flux. • Covered Sheds (2 Nos) for Pellet and Coke Storage of Capacity- 1,20,000 MT each. • Covered shed for storing Iron Ore Bearing Material and Flux of Capacity 4,27,000 MT <p>Environmental Benefits of Covered Shed:</p>

Sr. No.	Condition	Compliance Status
		<ul style="list-style-type: none"> • No fugitive emission during handling of material • No water contamination during rains • No spillage of material on roads • Covered storage shed prevents dust emission in the environment during operation of the yard. • Total expenditure on covered shed will Rs 320 Crores • Investment on Yard sprinklers, De-dusting system and Dry fogging system Rs 77.29 Crores • Top gas recovery turbine from Blast furnace and Gas Based power plant. • Energy efficient technologies provided in the Plant like waste heat recovery system, <ul style="list-style-type: none"> • Sinter plant- 1 Boiler (7 TPH) Waste Heat Recovery • Sinter plant- 2 Boiler (20 TPH) Waste Heat Recovery • Coke Oven -2 Boiler (9.2 TPH) Waste Heat Recovery • Coke Oven -2 Boiler (5.2 TPH) Waste Heat Recovery • Coke Oven -2 CD Boiler (5.2 TPH) Waste Heat Recovery • Steel Melting Shop-2 Boiler (74 TPH) Waste Heat Recovery • Coke Dry Quenching (CDQ) Boiler-1 (72 TPH) Waste Heat Recovery • CDQ Boiler -2 (94 TPH) Waste Heat Recovery • CDQ Boiler -3 (94 TPH) Waste Heat Recovery • All internal roads are made by concrete. • Regular operation of Road Sweeping machines and water sprinkler on road.

Sr. No.	Condition	Compliance Status
		<ul style="list-style-type: none"> • Transfer of De-dusting system dusts and other secondary dusts generated from Pollution Control equipment by bulkers. • The transfer of raw material from Jetty to plant is 100 % through belt and pipe conveyors thereby eliminating any chances of fugitive emission through transportation of material from outside plant to the raw material yard there by improving the Ambient Air Quality. <p>Hence the condition has been complied.</p>
xi	<p>On-line ambient air quality monitoring and continuous stack monitoring facilities for all the stacks should be provided and sufficient air pollution control devices. Gaseous emission levels including secondary fugitive emissions from all the sources should be controlled within the latest permissible limits issued by the Ministry vide G.S.R. 414(E) dated 30th May, 2008 and regularly monitored. Guidelines / Code of Practice issued by the CPCB should be followed.</p>	<p>Complied.</p> <ul style="list-style-type: none"> • Five Continuous Ambient Air Quality Monitoring stations have been installed in consultation with MPCB. All these stations are connected to URL of MPCB & CPCB & data is being transmitted online on real time basis for PM2.5, PM10, SO2, NOx & CO • Photograph of one of the CAAQMS is enclosed as Annexure- 8. • Continuous Emission Monitoring System (CEMS) for all the required stacks as per CPCB guidelines is installed on 46 nos of Stacks. • Adequate air pollution control devices are provide including Bag Filters to control fugitive emissions.
xii	<p>Dust suppression system and bag filters should be installed to control the fugitive dust emissions at conveyor and transfer points, product handling, loading and unloading points,</p>	<p>Complied.</p> <p>Raw Material Handling areas, yard sprinklers, Dry fogging system, dust extraction system provided in the junction houses and transfer points.</p>

Sr. No.	Condition	Compliance Status
		<ul style="list-style-type: none"> • Dust suppression by dry fog systems / water spraying systems provided at Raw Material Handling Section (RMHS) and other applicable areas. • All conveyors and Junction houses of Raw Material Handling systems are closed system. <p>Details of covered shed for storage of Raw Material;</p> <ul style="list-style-type: none"> • Covered shed for Jetty yard-A with a capacity of 110,000MT for Coal Storage • Covered shed for Jetty yard-B with a total capacity of 305,000 MT for Iron Ore and Flux. • Covered Sheds (2 Nos) for Pellet and Coke Storage of Capacity- 1,20,000 MT each. • Covered shed for storing Iron Ore Bearing Material and Flux of Capacity 4,27,000 MT <p>In Steel melting shop, Blast Furnace, Lime Calcination Plants, Pellet Plant adequate de-dusting systems with ESPs, Dry Gas Cleaning Plant, Cyclones and Bag Filters provided.</p> <p>Hence the condition has been complied.</p>
xiii	Water consumption should not exceed as per the CREP standard prescribed for the steel plants. Additional water, if any, required for the plant project operations should be met from rainwater stored in rainwater harvesting structures.	<p>Complied.</p> <ul style="list-style-type: none"> • The recommendations made in the Charter on Corporate Responsibility for Environment Protection (CREP) for the steel plants are implemented regarding specific water consumption. The specific water consumption for the year 2023 - 24 (April to

Sr. No.	Condition	Compliance Status
		<p>March 2024) was 2.35 m³/t of crude steel which is well below the CREP recommendation of 5 m³/t.</p> <ul style="list-style-type: none"> • Dry Gas Cleaning plant, a Best Available Technology installed in Blast Furnace. The traditional wet scrubbing process has high pressure drop due which the energy recovery is low (14 MW) but the bag filter has low pressure drop thus has high energy to recovery (36 MW), by using Dry GCP process the energy recovery has increase approx. of 22 MW, which has reduced specific water consumption. • Coke Oven Plant - a Best Available Technology Coke Dry Quenching systems installed and recovered the sensible heat of red hot coke, reduce energy consumption and pollution and improve the quality of coke. <p>Hence the condition has been complied</p>
xiv	<p>Rainwater harvesting scheme should be prepared so that the rainwater can be collected, re-used and may be used for ground water recharge. The concrete drains should be de-silted and regular supervision of the areas should be carried out so that blocking of drains may be avoided for quick discharge of rainwater. Efforts should further be made to use maximum water from the rain water harvesting sources. If needed, capacity of the reservoir should be enhanced to meet the maximum water requirement.</p>	<p>Complied.</p> <p>Rain Water collection system for utilization of rainwater for cooling water make-up has been implemented at 12 various buildings of Oxygen Plant, Coke Oven, Power Plant, MRSS and Admin.</p> <p>Rainwater Harvesting through Recharge bore-well is not feasible in the area as the water table is high being close to river and sea.</p>

Sr. No.	Condition	Compliance Status
xv	All the effluents should be treated and reused for dust suppression/green belt development. No effluent should be discharged and 'zero' discharge should be adopted.	Complying with Presently, treated effluent is partially discharged to the Amba River Estuary as per the permission obtained from MoEFCC – CRZ Division vide letter No F.No.11-7/2023-IA. III dated 5th April 2023. As per EC condition, ZLD shall be installed after completion and implementation of 100% projects from environmental Clearance. The permission is obtained for discharge of treated water approximately 615 M3/Hr.
xvi	Full utilization of fly ash should be ensured as per Fly Ash Notification, 1999 and subsequent amendment in 2003 and 2010. All the fly ash should be provided to cement and brick manufacturers for further utilization and Memorandum of Understanding should be submitted to the Ministry's Regional Office at Bhopal.	Not Applicable. The Captive Power are gas based, hence Fly Ash is not generated in the process.
xvii	Hazardous materials required during construction phase and in plant operations should be stored properly as per the regulations and reused/recycled as per the E(P)A Rules.	Complied. Hazardous wastes generated from the plant is stored in designated place and disposed to authorized recyclers as per the Hazardous Wastes (Management and Handling and transboundary) guidelines and MPCB consent conditions.
xviii	Vehicles and construction machinery are properly maintained to minimize the exhaust emission as well as noise generation to meet prescribed standards.	Complied. The vehicle and construction machineries PUCs are checked at Main gate before entering the plant. Electric vehicles are used in the transport pool for internal transportation inside the plant.

Sr. No.	Condition	Compliance Status
xix	Risk and Disaster Management Plan along with the mitigation measures should be prepared and implemented.	Complied. Risk & Disaster Management plan has been prepared and implemented through Dedicated department of Health and Safety.
xx	All the recommendations made in the Charter on Corporate Responsibility for Environment Protection (CREP) for the Steel Plants should be implemented.	Complying with The recommendations made in the Charter on Corporate Responsibility for Environment Protection (CREP) for the Steel Plants shall be complied as per the guidelines. The recommendations made in the Charter on Corporate Responsibility for Environment Protection (CREP) for the steel plants are implemented. <ul style="list-style-type: none"> • Dry Gas Cleaning plant installed in Blast Furnace. The traditional wet scrubbing process has high pressure drop due which the energy recovery is low (14 MW) but the bag filter has low pressure drop thus has high energy to recovery (36 MW), by using Dry GCP process the energy recovery has increase approx. of 22 MW, which will reduce CO2 emissions by approx. 1.4 Lac.tCO2eq. This system saves specific water consumption. • Installed Gas Holders (Coke Oven Gas and LD Gas) which helps the steady network flow for distribution of gas in constant pressure (Operating pressure 996 mmWC). Also it helps to proper utilization of waste gases. It saves CO2 and Energy. • Coke oven plant – Tar sludge / ETP sludge are reused in the Coking process. • Blast Furnace TRT – Energy recovery of top blast furnace gas is being done with power generation through TRT by using top pressure of BF gas. • Coke Oven Plant – Coke Dry Quenching systems (3 Nos) installed and recover the sensible heat of red hot coke, reduce energy consumption and pollution and improve the quality of coke. Each

Sr. No.	Condition	Compliance Status
		<p>CDQ will reduce water consumption by 1920 m3/day and energy of 70 MW will be recovered along which will reduce the CO2 emissions by approx. 10.9 Lac.t CO2eq</p> <ul style="list-style-type: none"> • Steel Melting Shop (SMS), secondary de-dusting system (Gas Cleaning Plants 4 Nos) has been installed to control fugitive emissions • Coal Injection Plant for direct injection of pulverized coal in furnace has been implemented. Present rate of CDI in our Blast Furnace 1 is 155 Kg/THM and Blast Furnace 2 is 195 Kg/THM (average for the year 2023-24). • BF Slag- 100% utilized in Cement plant. • EAF slag- 100 % for construction activities for expansion projects by land filling in the low lying areas and is also being used for internal road making. Using EAF slag as aggregates for roads in National Highway (Concrete and asphalt roads) • Cast House Fume extraction system inclusive of tap holes, runners, skimmers, ladle and charging points have been provided to control Fugitive emissions from Blast Furnace. <p>Hence the condition has been complied.</p>
xxi	All the commitments made to the public during public hearing/public consultation should be satisfactorily implemented and adequate budget provision should be made accordingly.	<p>Being Complied.</p> <p>Separate budget is maintained for implementing projects/ issues discussed during Public Hearing.</p> <p>CSR activities in various sectors are being done in the surrounding villages and a time bound action plan for various CSR activities have been submitted to MoEF&CC as per EAC recommendation of 2.5% of project cost.</p>

Sr. No.	Condition	Compliance Status
		<p>The project proponent has spent Rs 13.42 Crores under CSR activity for 2023-24 (April to March 2024)</p> <p>The above amount has been spent on Social Development- (Education & Training), Skill Development, Water and Sanitization, Agriculture, Rural Development, Health, Solid Wastes Management and Community Development.</p>
xxii	All the permanent workers should be covered under ESI Scheme. The company should have the provision for treatment of its workers at the local Nursing Homes & Hospitals in case of emergency. Annual Medical Check-up on some medical parameters like Blood test, Chest X-Ray, Eye test, Audiometry, Spirometry etc. should be conducted amongst the employees of the Company.	<p>Being Complied.</p> <p>As per the Factories Act, regular health check-up has been done for workers and employees & records are maintained on regular basis. Annual Medical Check-up conducted for medical parameters like Blood test, Chest X-Ray, Eye test, Audiometry, Spirometry etc.</p>
	B) General Conditions	
i	The project authorities must strictly adhere to the stipulations made by the Maharashtra Pollution Control Board and the State Government.	<p>Complying with</p> <p>Consent to Establish and Consent to operate received from Maharashtra Pollution Control Board (MPCB). The compliance is regularly monitored by MPCB.</p>
ii	No further expansion or modifications in the plant should be carried out without prior approval of the Ministry of Environment, Forests and Climate Change (MoEF&CC).	Noted and Shall be complied.
iii	At least four ambient air quality monitoring stations should be established in the downward direction as well as where maximum ground level concentration of PM ₁₀ , PM _{2.5} , SO ₂ and NO _x are anticipated in consultation with the SPCB. Data on ambient air quality and stack emission should be regularly submitted to this Ministry including its Regional Office at Nagpur and the	<p>Complying with</p> <p>5 Nos. online Ambient Air Quality Monitoring Station with consultation of MPCB & data connected the same to MPCB & CPCB Website.</p> <p>Six monthly compliance including ambient air quality is submitted to Regional Office at Nagpur.</p>

Sr. No.	Condition	Compliance Status
	SPCB/CPCB once in six months.	
iv	Industrial wastewater should be properly collected, treated so as to conform to the standards prescribed under GSR 422 (E) dated 19th May, 1993 and 31st December, 1993 or as amended from time to time. The treated wastewater should be utilized for plantation purpose.	Being Complied. Waste water treatment facility is provided to treat the industrial effluent. Treated effluent is used in the coke slag quenching. Treated Sewage from STP is used in plantation and green belt development.
v	The overall noise levels in and around the plant area should be kept well within the standards (85 dBA) by providing noise control measures including acoustic hoods, silencers, enclosures etc. on all sources of noise generation. The ambient noise levels should conform to the standards prescribed under EPA Rules, 1989 viz. 75 dBA (daytime) and 70 dBA (night time).	Complied. Noise control measures are implemented like acoustic hoods, silencers, enclosures etc. on all sources of noise generation.
vi	Occupational health surveillance of the workers should be done on a regular basis and records maintained as per the Factories Act.	Being Complied. As per the Factories Act, regular health check-ups for workers and employees are carried out on regular basis.
vii	The company should develop rain water harvesting structures to harvest the rain water for utilization in the lean season besides recharging the ground water table.	Being Complied. Rain Water collection system for utilization of rainwater for cooling water make-up has been implemented at 12 various buildings of Oxygen Plant, Coke Oven, Power Plant, MRSS and Admin. Rainwater Harvesting through Recharge bore-well is not feasible in the area as the water table is high being close to river and sea.
viii	The project proponent should also comply with all the environmental protection measures and safeguards recommended in the EIA/EMP report. Further, the company must undertake socio-economic development activities in the surrounding villages like community development programmes,	Being Complied

Sr. No.	Condition	Compliance Status
	educational programmes, drinking water supply and health care etc.	
ix	Requisite funds should be earmarked towards capital cost and recurring cost/annum for environment pollution control measures to implement the conditions stipulated by the Ministry of Environment, Forests and Climate Change (MoEF&CC) as well as the State Government. An implementation schedule for implementing all the conditions stipulated herein should be submitted to the Regional Office of the Ministry at Nagpur. The funds so provided should not be diverted for any other purpose.	Being Complied. Rs 806 Crores have been spent as investment on Pollution Control System (Air, Water and Solid wastes).
x	A copy of clearance letter should be sent by the proponent to concerned Panchayat, Zila Parishad/Municipal Corporation, Urban Local Body and the local NGO, if any, from whom suggestions/representations, if any, were received while processing the proposal. The clearance letter should also be put on the web site of the company by the proponent.	Complying with The project proponent has submitted a copy of clearance letter to concerned Panchayat, Zilla Parishad/Municipal Corporation, Urban Local Body and the local NGO. Acknowledgement copy of submission is enclosed as Annexure-10 The clearance letter is also uploaded to the JSW Steel web site.
xi	The project proponent should upload the status of compliance of the stipulated environment clearance conditions, including results of monitored data on their website and should update the same periodically. It should simultaneously be sent to the Regional Office of the MOEFCC at Nagpur. The respective Zonal Office of CPCB and the SPCB. The criteria pollutant levels namely; PM10, SO2, NOx (ambient levels as well as stack emissions) or critical sectoral parameters, indicated for the projects should be monitored and displayed at a convenient location near the main gate of the company in the public domain.	Complied. The project proponent has been uploading the status of compliance of the stipulated environment clearance conditions, including results of monitoring data on JSW Steel website on a six monthly basis.- Screenshot of website display enclosed as Annexure- 11. The EC compliance report and Environmental monitoring reports (for Air, Water, Solid Waste and Hazardous wastes) are submitted to MoEFCC, CPCB, and MPCB on six monthly basis.- Copy of email enclosed as Annexure-12.

Sr. No.	Condition	Compliance Status
		The CEMS data and CAAQMS data are displayed at the main gate.
xii	The project proponent should also submit six monthly reports on the status of the compliance of the stipulated environmental conditions including results of monitored data (both in hard copies as well as by e-mail) to the Regional Office of MOEFCC, the respective Zonal Office of CPCB and the SPCB. The Regional Office of this Ministry at Nagpur / CPCB / SPCB should monitor the stipulated conditions.	The project proponent has been submitting six monthly Environmental Clearance compliance report and six monthly Environmental monitoring reports to Regional Office of MoEFCC, MPCB and CPCB. Hence the condition has been complied.
xiii	The environmental statement for each financial year ending 31st March in Form-V as is mandated to be submitted by the project proponent to the concerned State Pollution Control Board as prescribed under the Environment (Protection) Rules, 1986, as amended subsequently, should also be put on the website of the company along with the status of compliance of environmental conditions and should also be sent to the respective Regional Office of the MOEFCC at Nagpur by e-mail.	Complied. Environment Statement (Form-V) for 2023-24 submitted to MPCB, Compliance of Environmental Clearance is submitted to Regional Office of the MOEF&CC at Nagpur by e-mail.
xiv	The Project Proponent should inform the public that the project has been accorded environmental clearance by the Ministry and copies of the clearance letter are available with the SPCB and may also be seen at Website of the Ministry of Environment, Forests and Climate Change (MoEF&CC) at http://envfor.nic.in . This should be advertised within seven days from the date of issue of the clearance letter, at least in two local newspapers that are widely circulated in the region of which one should be in the vernacular language of the locality concerned and a copy of the same should be forwarded to the Regional office at Nagpur.	Complied. The project proponent has Published the information of receipt of Environment clearance from MoEFCC in newspaper as per guidelines provided in Local newspaper Dainik Krushiwal, Raigad Times, Ramprahar dated August 30, 2015 and English newspaper Indian Express dated September 01, 2015. Copy of newspaper publication is enclosed as Annexure-13 .

Sr. No.	Condition	Compliance Status
xv	Project authorities should inform the Regional Office as well as the Ministry, the date of financial closure and final approval of the project by the concerned authorities and the date of commencing the land development work.	Complied. All the information of stages of development of projects are submitted to regional Office, MOEF&CC, Nagpur alongwith six monthly compliance report.
11	The ministry may revoke or suspend the clearance, if implementation of any of the above conditions is not satisfactory.	Noted
12	The Ministry reserves the right to stipulate additional conditions if found necessary. The Company in a time bound manner shall implement these conditions.	Noted
13	The above conditions shall be enforced, inter-alia under the provisions of the Water (Prevention and Control of Pollution) Act 1974, the Air (Prevention and Control of Pollution) Act 1981, the Environment (Protection) Act 1986, Hazardous Wastes (Management, Handling and Transboundary Movement) Rules 2008 and the Public (Insurance) Liability Act 1991 along with their amendments and Rules.	The plant is regularly complying for <ul style="list-style-type: none"> • The Water (Prevention and Control of Pollution) Act 1974 • The Air (Prevention and Control of Pollution) Act 1981 • The Environment (Protection) Act 1986, Hazardous Wastes (Management, Handling and Transboundary Movement) Rules 2008 The Public (Insurance) Liability Act 1991 along with their amendments and Rules. Hence the condition has been complied.

Annexure 1

Water Drawl Permission from Irrigation Department

Copy of all Water drawl permission letters Annexure-3.2

List of all Water drawl permission letters of JSWSL, Dolvi

Sn	Description	Permitted drawl quantity (in MLD)
1.	7.00 MLD (ARCL) WATER AGREEMENT	7.00
2.	9.00 MLD (JSW VILLAGERS) WATER AGREEMENT	9.00
3.	35.70 MLD (JSW) WATER AGREEMENT	35.70
4.	55.16 MLD (JSW) WATER AGREEMENT	55.16
5.	58.98 MLD (JSW) WATER AGREEMENT	58.98
Total permitted quantity for drawl		165.84

Annexure 2

Photos of ETP at CPP 2 and BOD 1

Annexure-2 a



Pictorial view of Cooling tower chemical treatment at captive Power plant -2

•Annexure-2 b



Pictorial view of BOD Plant Coke oven -1

•Annexure-2 b



Pictorial view of Aerobic and anoxic treatment of BOD Plant Coke oven -2

Annexure 3

Screenshot of Continuous Emission Monitoring System

Annexure 4

ETP Photo – Blast Furnace 1

Annexure- 4



Pictorial view of Blast furnace – 1 ETP

Annexure 5

Green Belt Photos

Green belt Development Near Main Gate

Plantation Near Goa Gate



Plantation Near Goa Gate



Green belt inside the plant



Green belt Near Main Gate



Green belt Development

Green belt at Admin building and Gas Storage



Green belt at Internal Roads





Green Belt along Boundary Wall



Green belt at peripheral road



Green belt near Junction house/conveyor belt route



Green belt along conveyor belt route



Green belt at Sponge Iron Plant



Green belt at Gas receiving Station



Green belt at open area within plant



Green belt near LD Plant and internal road



Green belt at HSM Plant



Green belt near power Plant



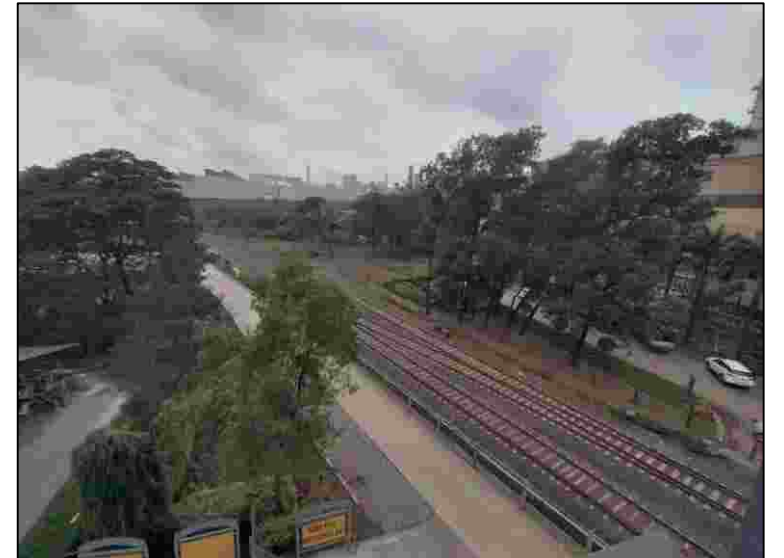
Green belt in open area near Main Gate



Green belt at receipt and dispatch yard



Green belt around oxygen plant and rail track



Annexure 6

Expenditure on Corporate Environment Responsibility (CER)

Annexure 6

CER Details for five years (in Crores)

S. No	Programme	Program details	Total	2017-18	2018-19	2019-20	2020-21	2021-22
1	Health	Construction of a new Multi speciality Hospital Jindal Sanjeevani Dolvi Hospital (70 beds) located near the plant on the road to Wadkhal. The hospital will serve the healthcare needs of the local community and employees at affordable costs making healthcare accessible to the local community.	65	10	20	25	10	-
2	Water	Provision of drinking water to 45 villages along the makeup water line to the steel plant.	15	2	8	5		
		Construction of Rain Water Harvesting at roof top of nearby villages and nearby schools.	0.76	0.17	0.14	0.15	0.15	0.15
		Renovation of community ponds nearby villages	0.45	0.08	0.07	0.1	0.1	0.1
3	Infrastructure	Construction of internal village roads, pathways, Drainage and installation of solar street lights	16.35	1.75	3.4	3.6	3.8	3.8
4	Skill development	Supporting Infrastructure facilities at Industrial Training Institutes (ITIs) at Nagothae and Pen. JSW Skill school at Wadkhal, Pen for tailoring, fish, hand gloves, vegetable shop, other livelihood options.	8	1.5	1.25	1.75	1.75	1.75
5	Agricultural and Scientific support	Support of better farming practices, market linkages and create awareness about Agri allied business	4.25	0.65	0.9	0.9	0.9	0.9
6	Plantation	Mangrove plantation within 10 KM area from the plant. (345 Acres). Tree Plantation at Forest land of nearby plant area (Dolvi, Khakarav).	9	1.25	1.75	2	2	2

		Avenue Plantation at NH in the plant area.						
		TOTAL	118.81	17.4	35.51	38.5	18.7	8.7

Annexure 7

**Minutes of Meeting – 4th Expert Appraisal Committee
meeting of MoEFCC dated 25th February 2016**

**Ministry of Environment, Forest and Climate Change
(Impact Assessment Division)**

SUMMARY RECORD OF THE FOURTH (4th) MEETING OF EXPERT APPRAISAL COMMITTEE FOR ENVIRONMENTAL APPRAISAL OF INDUSTRY-I SECTOR PROJECTS CONSTITUTED UNDER EIA NOTIFICATION, 2006.

The fourth meeting of the Expert Appraisal Committee (EAC) for Industry-I Sector in terms of the provisions of the EIA Notification, 2006 for Environmental Appraisal of Industry-I Sector Projects was held on 25th – 26th February, 2016 in the Ministry of Environment, Forest and Climate Change. Prof. Arun Pandey, Member of EAC has expressed his inability to attend the meeting due to prior departmental engagements. The list of participants is annexed.

After welcoming the Committee Members, discussion on each of the agenda items was taken up ad-seriatim.

Confirmation of the minutes of the 3rd Meeting

The minutes of the 3rd meeting, as circulated were confirmed.

4.3 ENVIRONMENTAL CLEARANCE (EC)

4.3.1 Cement manufacturing unit of M/s Mehboob Cement Industries Pvt. Ltd. located at Village Wuyan Bala, Tehsil Pampore, District Pulwama, Srinagar, Jammu & Kashmir [J-11011/247/2015-IA.II(I)]

The project proponent and their consultant made a presentation before the Committee. It was informed that the project is located at Village Wuyan Bala, Tehsil Pampore, District Pulwama, Srinagar. It is a green field project for the production capacity of 600 TPD cement. The proposal was initially submitted to State Environmental Impact Assessment Authority (SEIAA) on 18.01.2013 for grant of Terms of Reference (TOR), as per EIA Notification, 2006. Subsequently, the project was appraised by the SEIAA and ToRs were prescribed to the project on 23.02.2013.

The project proponent mentioned that the Dachigam National Park is located at a distance of 6.5 Km (Aerial distance) from the project site and the Dachigam National Park is in the buffer zone i.e. within the 10 km radius of the project site. The General Condition of EIA Notification, 2006 is applicable to the project; therefore, the proponent submitted the proposal to MoEFCC for appraisal.

During the discussions, the proponent was informed by the Committee that the Ministry *vide* amendment in EIA Notification, 2006 [SO No. 1599 (E) dated 25.06.2014], modified the provisions of the General Condition as, *'any project or activity specified in category 'B' will be appraised at the Central level as Category 'A', if located in whole or in part within 5 km. from the boundary of (i) Protected Areas notified under the Wildlife (Protection) Act, 1972 (53 of 1972); (ii) Critically Polluted areas as notified by the Central Pollution Control Board constituted under the Water (Prevention and Control of Pollution) Act, 1974 (6 of 1974) from time to time; (iii) Eco-sensitive areas as notified under sub-section (2) of section 3 of the*

- xvi. The proponent shall prepare a detailed CSR Plan for every year for the next 5 years for the existing-cum-expansion project, which includes village-wise, sector-wise (Health, Education, Sanitation, Health, Skill Development and infrastructure requirements such as strengthening of village roads, avenue plantation, etc) activities in consultation with the local communities and administration. The CSR Plan will include the amount of 2% retain annual profits as provided for in Clause 135 of the Companies Act, 2013 which provides for 2% of the average net profits of previous 3 years towards CSR activities for life of the project. A separate budget head shall be created and the annual capital and revenue expenditure on various activities of the Plan shall be submitted as part of the Compliance Report to RO. The details of the CSR Plan shall also be uploaded on the company website and shall also be provided in the Annual Report of the company.
- xvii. The Company shall submit within three months their policy towards Corporate Environment Responsibility which shall inter-alia address (i) Standard operating process/procedure to bring into focus any infringement/deviation/ violation of environmental or forest norms/conditions, (ii) Hierarchical system or Administrative order of the Company to deal with environmental issues and ensuring compliance to the environmental clearance conditions and (iii) System of reporting of non-compliance/violation environmental norms to the Board of Directors of the company and/or stakeholders or shareholders.
- xviii. Provision shall be made for the housing of construction labour within the site with all necessary infrastructure and facilities such as fuel for cooking, mobile toilets, mobile STP, Safe drinking water, medical health care, crèche etc. The housing may be in the form of temporary structures to be removed after the completion of the project.
- xix. The project proponent shall provide for solar light system for all common areas, street lights, villages, parking around project area and maintain the same regularly.
- xx. The project proponent shall provide for LED lights in their offices and residential areas.

4.5 ANY OTHER ITEM

4.5.1 Partial transfer of Environmental Clearance for 1MTPA Coke Oven Plant and 2.5 MTPA Coke Oven Plant from M/s JSW Steel Ltd to M/s Dolvi Coke Projects Ltd. located at Village Dolvi, Taluka Pen, District Raigad, Maharashtra regarding amendment in Environment Clearance (F.No. J-11011/76/2013-IA.II(I))

The Environmental Clearance to the project of 3.0 MTPA to 5.0 MTPA Integrated Steel plant at Village Dolvi, Taluka Pen, District Raigad in Maharashtra was accorded *vide* letter J-11011/166/2011-IA-II (I) dated 21st November 2012 to M/s JSW Steel Ltd and further expansion of its project up to 10 MTPA was accorded environmental clearance *vide* letter J-11011/76/2013-IA II (I) dated 25th August 2015.

It has been explained by the project proponent that the expansion projects up to 5 MTPA have been established. The existing steel plant is based on the Direct Reduced Iron (DRI) - Blast Furnace-CONARC - Continuous Casting – Rolling Mill (CSP) route. The expansion is based on proven BF - EAF route.

The project proponent mentioned that the environment clearance for steel plant up to 5 MTPA includes 1.0 MTPA recovery type Coke Oven. Further, the environment clearance up to 10 MTPA plant includes 2.5 MTPA recovery type coke oven plant. It is proposed to combine the Coke Ovens of 1.0 MTPA and 2.5 MTPA, which are part of the earlier ECs as mentioned above into a single 3.5 MTPA Coke Oven plant in same location under 5 MTPA to 10 MTPA expansion project. By combining both the Coke Ovens into one the pollution load and other resource requirement like water will not increase; however the land requirement and Capital Cost will be optimized for setting up a single Coke oven in-place of setting up two small and separate coke ovens. Also this will have varied and distinct advantages in terms of lower land foot print with compact design for better operational and maintenance practices and logistics for handling coal and coke.

Total project cost of the coke oven plant of 3.5 MTPA will be Rs 2520 Crores. In order to optimize the capital expenditure, it is proposed to outsource the establishment and operations of the Coke Oven facility. The 3.5 million ton Coke Oven will be established and operated by an Associate Company, called Dolvi Coke Projects Limited and JSW Steel will be the largest shareholder of the SPV. JSW Steel Ltd. will sign the take or pay agreement from the associate company. This arrangement will help JSW to optimize the requirement of capital expenditure for setting up 10 Million ton capacity at Dolvi Works.

The project proponent further mentioned that while granting the environmental clearance for the expansion project, Ministry vide its specific condition No (iii) stipulated that *'The commitment made by the PP for plantation of the green belt to the tune of 655 acres should be expedited. Three rows of green belt, 12-15 meters wide, all along the periphery of the plant should be planted'*. The project proponent mentioned that they are in the process of developing green belt with three tier plantation along the periphery and avenue plantation along the internal roads inside the premises. JSW Steel Ltd. is fully committed to comply with the 33% green belt requirement. However, it is becoming difficult to get continuous land at Dolvi, Taluka Pen, District Raigad to comply with 33% green belt cover along the periphery premises. Therefore, the project proponent requested to grant permission for plantation in nearby areas in degraded private/ Government land outside the plant premises in coordination with District Revenue/ Forest Department, Raigad, Maharashtra or plantation in line with the condition stipulated by the Maharashtra Pollution Control Board in its Consent to Operate, which states "The applicant shall bring minimum 33% of the available open land under green coverage / plantation".

Regarding CSR related activity the project proponent mentioned that EAC on 26th March, 2015, directed to allocate 2.5% of the total project cost to be spent on CSR activities, which includes 2% of the annual profit as provided in clause No 135 of the Companies Act 2013. Accordingly, the CSR plan of 10 years was submitted to MoEFCC and was accepted. However while granting the environmental clearance, an amount equivalent to 5% of the total cost of the project to be earmarked towards the Enterprise Social Commitment (ESC) based on local needs, has been mentioned as per the specific conditions, point no (v), of the EC dated 25.08.2015. The project proponent requested to consider the CSR plan of 2.5% of the project cost as submitted.

Based on the presentation made and discussions held in detail, the Committee opined as under:

- (i) Regarding combining of the two Coke Oven plants of 1.0 MTPA and 2.5 MTPA, which were part of earlier ECs, into a single 3.5 MTPA Coke Oven plant in the same location under 5 MTPA to 10 MTPA expansion project to be operated by their Associate Company, called Dolvi Coke Projects Limited is an administrative decision to be taken by the Ministry. However, as there is no provision in the notification for partial transfer of the environment clearance, the Committee has; therefore, deferred decision in the matter and referred matter to Ministry.
- (ii) Regarding plantation, the Committee agreed to the submission of the project proponent and recommended the proposal of plantation in nearby areas in degraded private/ Government land outside the plant premises in consultation and coordination with District Revenue/ Forest Department, Raigad, Maharashtra.
- (iii) With regard to reconsideration of CSR budget, the Committee recommended to revise the condition for 2.5% of the total cost of the project for CSR instead of 5%.

4.5.2 Expansion of Steel Plant by M/s Drolia Electrosteels Private Limited, located at Siltara, Block Dharsiwa, District Raipur, Chhattisgarh [F. No. J-11011/386/2008-IA-II (I)]

The above proposal was considered by the Reconstituted Expert Appraisal Committee (Industry) during its 33rd meeting held on 10th -11th February, 2015. The Committee after deliberations recommended for extension of validity of environment clearance for a period of 5 years with effect from 15th December, 2013.

However, in the meantime an amendment in the EIA Notification, 2006 was issued by the Ministry vide Gazette Notification No. S.O. 1141(E) dated 29th April, 2015, extending the period of validity of Environment Clearance from 5 years to 7 years. Therefore, the environment clearance accorded to the Project vide letter No. J-11011/386/2008-IA-II (I) dated 15.12.2008 stands valid upto 14.12.2015. Therefore a communication was sent to the project proponent that in case of seeking further extension of environment clearance beyond 14.12.2015, an application as per the provisions of EIA Notification, 2006 as amended may be submitted afresh by online to the Ministry.

The project proponent *vide* online application No. IA/CG/IND/19892/2008 dated 29th September, 2015 requested for extension of validity of environment clearance dated 15.12.2008 for further period of 3 years.

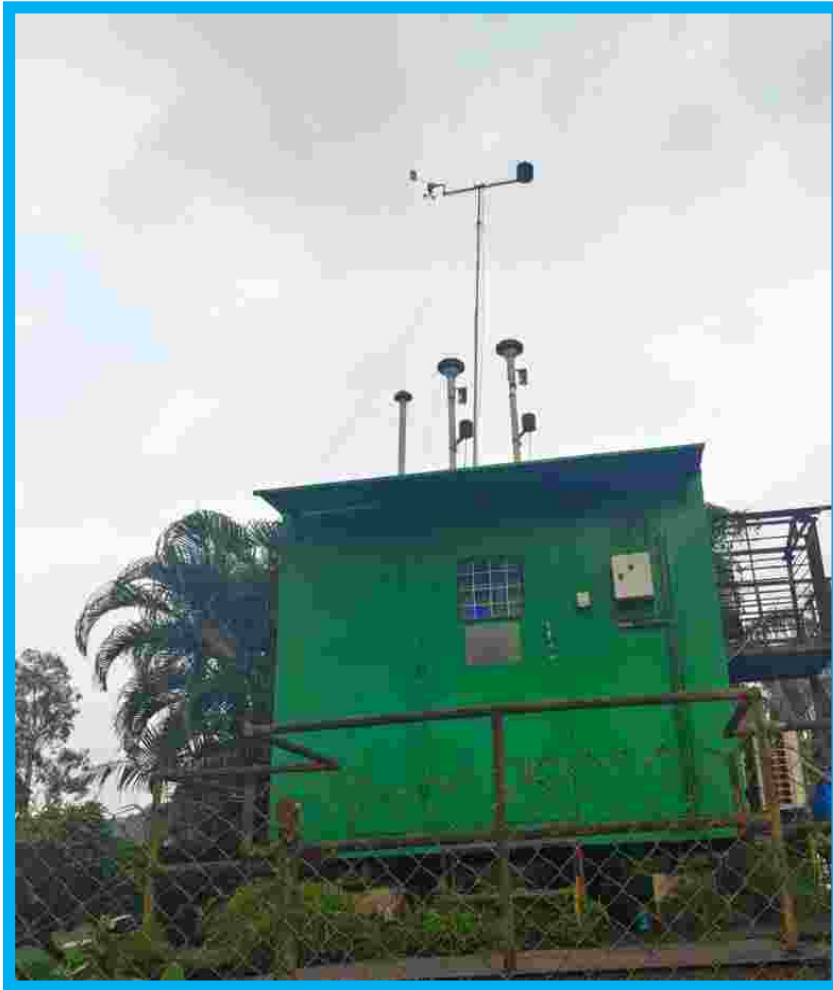
The implementation status of the project as informed by the proponent is indicated below:

S. No.	Facility	Capacity	Facilities implemented	Yet to be Implemented
1	Sponge Iron (100tpdX2nos DRI kilns)	66000 TPA	66000 TPA	-
2	Semi Finished Steel billet & Ingot	166000 TPA	145200 TPA	20800 TPA
3	Iron Ore beneficiation	200000 TPA		200000 TPA

Annexure 8

Photograph of Continuous Ambient Air Quality Monitoring system

Annexure- 8



Pictorial view of Continuous ambient air quality monitoring station

Annexure 9

CRZ Clearance obtained from MoEFCC for Marine Effluent Discharge

F.No.11-7/2023-IA.III
Government of India
Ministry of Environment, Forest and Climate Change
IA-III Section (CRZ)

Indira Paryavaran Bhawan
Jor Bagh Road
New Delhi - 110003
Dated: 5th April, 2023

To

M/s JSW Steel Ltd
Dolvi, Geetapuram
District Raigad
Maharashtra – 402107
Email: anand.raijsw.in

Subject: Installation of Discharge of Treated Effluent System from Integrated Steel Plant at JSW Steel Ltd into Amba Estuary at Dolvi, Taluka Pen, District Raigad, Maharashtra by M/s JSW Steel Ltd - CRZ Clearance - regarding.

Sir,

This has reference to your proposal No. IA/MH/CRZ/288138/2022 dated 5th January, 2023 on the above mentioned project proposal for CRZ Clearance, in accordance with the provisions of the Coastal Regulation Zone (CRZ) Notification, 2011 issued under the Environment (Protection) Act, 1986.

2. The Ministry of Environment, Forest and Climate Change has examined the proposal for CRZ Clearance to the project for Installation of Discharge of Treated Effluent System from Integrated Steel Plant at JSW Steel Ltd into Amba Estuary at Dolvi, Taluka Pen, District Raigad, Maharashtra by M/s JSW Steel Ltd.

3. The proposal was considered by the Expert Appraisal Committee (EAC) for Infrastructure Development, Coastal Regulation Zone, Building / Construction and Miscellaneous projects, in its meetings held on 17th January, 2023 and 7th February, 2023. The project proponent and their consultant made detailed presentation and informed as under:

- (i). The project located in Village Dolvi, Raigad at Latitude: 18° 42' 16.30" N and Longitude: 73° 01' 41.40" E. and activity located in CRZ IV(B) area.
- (ii). Length of pipeline from shore to outfall point is 118m. Width of excavation for pipe laying is 2.5m. Therefore, area of proposed activity is 295 Sq.m.
- (iii). M/s JSW Steel Ltd. has proposed to discharge treated effluent into Amba estuary in compliance to the specific condition no. iv of the environmental clearance amendment accorded by MoEFCC vide F. No. J-11011/76/2013-IA. II (I) dated 16th June 2020.
- (iv). The specific condition no. iv in the aforesaid amendment clearance states that "The project proponent shall achieve zero liquid discharge (ZLD) at the end completion of all the facilities. In the meantime, the treated wastewater shall be discharged into sea after obtaining necessary permission/ clearance from the concerned regulatory authority."
- (v). M/s JSW Dolvi executing expansion of its steelmaking capacity from 5 MTPA to 10 MTPA for which environmental clearance has been accorded by MoEFCC vide letter no J-11011/76/2013-IA II (I) dated 25th August 2015. Some facilities of the expansion program have been commissioned.
- (vi). Currently, the effluents generated from operating facilities are treated in individual effluent treatment plants and used in Coke and slag quenching. However, with



commissioning of facilities like Coke Dry Quenching, gas based boilers and power plants surplus treated water about 615 m³/h will be generated after commissioning of all facilities by December 2025.

- (vii). A comprehensive ZLD unit with RO systems and evaporators will be installed and commissioned by December 2025. The ZLD system will thus be functional by December 2025, ensuring 100% reuse of wastewater and zero liquid discharge.
- (viii). Maximum plume dispersion is expected to 310 m in worst case scenario (considering 1057m³/h) as per the effluent dispersion modelling study carried out by NIO.
- (ix). Fishing areas for the local fishermen are about 1000 m away from the proposed discharge location.
- (x). Based on marine studies it is recommended that the treated effluents of 1057 m³/h having density 1001 kg/m³ generated by the M/s JSW steel plant, Dolvi, may be released at Lat: 18° 42' 16.30" N; Long: 73° 01' 41.40" E through four port diffuser.
- (xi). The diffuser specifications are recommended as follows: Inner diameter of ports = 0.1766 m, No of ports = 4, Port elevation from sea bed = 0.5 m, Angle of port = 15°, Minimum distance between ports = 4.0 m, Jet Velocity = 3.0 m/s.
- (xii). Treated effluents will be collected in the sump which will be located at south side of the plant boundary and will be pumped to Amba Estuary. The total maximum discharge water considered for study is 1,057m³/h. However, the planning for actual discharge is 615 m³/h. Type of pump - Vertical Centrifugal Pumps.
- (xiii). Discharge – Cross country pipeline laid along the existing conveyor feeding raw material to steel plant from M/s JSW Dharamtar Port. Final discharge location of treated waste water as per the location decided by NIO through waste water dispersion modelling study. Online effluent analyser provided and connected to MPCB & CPCB.
- (xiv). A comprehensive marine quality monitoring program shall include monitoring parameters of Water quality, Sediment quality and Flora & Fauna.
- (xv). Approximately 10 KLD water will be required for drinking and construction purpose which will be sourced from existing water supply system. The JSW Steel Ltd has water supply approved from Irrigation Department of Government of Maharashtra.
- (xvi). Approximately 6 kg/day of domestic solid waste is estimated to be generated from labour. The solid waste will be disposed to authorized recycler.
- (xvii). Treated effluents will be collected in the sump which will be located at south side of the plant boundary and will be pumped to Amba Estuary. The total maximum discharge water considered for study is 1,057m³/h. However the planning for actual discharge is 615 m³/h.
- (xviii). M/s JSW steel, Dolvi has been carrying out Mangrove plantation since 2016 by involving local women community. In 2016-2017 it has planted 105000 plants; in 2017-2018 it has planted 3,00,000 plants. In 2018-2019 around 3,00,000 mangroves plantation is planned and in 2019-2020 it will plant another 3,00,000 mangroves.
- (xix). The Baseline Monitoring Locations:

Monitoring location	Station no	Geographic Co-ordinates
Amba Estuary mouth	1	18° 49' 59.16"N; 72° 56' 39.48"E
Patalganga estuary mouth	2	18° 48' 40.26"N; 72° 58' 29.94"E
Ganeshpuri	3	18° 46' 09.42"N; 72° 59' 35.34"E

Handwritten signature

RIL DP	4	18° 45' 08.58"N; 72° 59' 06.48"E
Dharamtar port	5	18° 42' 10.44"N; 73° 01' 42.60"E
Upper estuary	6	18° 36' 10.20"N; 73° 05' 08.82"E
Upper estuary	7	18° 32' 44.28"N; 73° 07' 46.26"E
Kasumata devi mandir	TS	18° 41' 43.00"N; 73° 01' 39.50"E

- (xx). About 25 of employment likely to be generated by the project and estimated cost of the project is ₹22.3 Crores.
- (xxi). The Maharashtra Coastal Zone Management Authority intimated that the route of pipeline falls largely in the CRZ III area, the pipeline falls at the river end in CRZ IB, CRZ IVB area and activity is a permissible as per CRZ Notification 2011. The Maharashtra Coastal Zone Management Authority has recommended the proposal for CRZ clearance *vide* its Letter No. CRZ 2020/CR86/TC4 dated 22/06/2022.

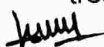
4. The Committee made detailed deliberation on the proposal. The Committee noted that the proposed discharge of treated effluent and the discharge system shall be discontinued post commissioning of ZLD system by 2025. The Committee also noted that the MCZMA recommended and intimated that the route of pipeline falls largely in the CRZ III area, the pipeline falls at the river end in CRZ IB, CRZ IVB area and activity is a permissible as per CRZ Notification 2011. The PP shall ensure that the treated effluent discharge into sea / marine outfalls as per the prescribed standards of by CPCB / SPCB. The Committee further also advised to PP forward immediately by e-mail to all EAC Members about the detail of the untreated and treated effluent quality of various parameters for the present effluent stream from the plant. The same has been submitted by PP *vide* e-mail / letter No. Nil, dated 07/02/2023 and same also circulated to all EAC members including MoEFCC and also accepted by EAC while approving the minutes.

The Committee after detailed deliberations and considering the submissions made by the project proponent recommended the proposal for CRZ Clearance, subject to certain terms and conditions.

5. Based on the recommendation of the Maharashtra Coastal Zone Management Authority and considering the submissions made by the project proponent, the Ministry of Environment, Forest and Climate Change, in acceptance of the recommendations of the Expert Appraisal Committee (CRZ), hereby accords CRZ Clearance to the project for **Installation of Discharge of Treated Effluent System from Integrated Steel Plant at JSW Steel Ltd into Amba Estuary at Dolvi, Taluka Pen, District Raigad, Maharashtra by M/s JSW Steel Ltd**, under the provisions of the CRZ Notification, 2019 and amendments thereto, subject to the compliance of terms and conditions as under:-

PART A – SPECIFIC CONDITIONS:

- (i) All construction shall be strictly in accordance with the provisions of the CRZ Notification, 2011, as amended from time to time.
- (ii) The proposed discharge of treated effluent and the discharge system shall be discontinued post commissioning of ZLD system by the end of year 2025 and dismantling the pipeline and all the associated infrastructure.
- (iii) The monitoring plan should be prepared for the automated water quality after discharge of treated water into Amba estuary and six monthly monitoring reports should be submitted to Regional Office of MoEFCC.
- (iv) M/s JSW Steel Ltd. should comply with the effluent dispersion modelling study carried out by the NIO in January 2019 to predict the maximum dilution of the treated effluent around the point of discharge in Amba Estuary.



- (v) M/s JSW Steel Ltd. should strictly ensure disposal of treated effluent discharge into Sea or marine outfalls to the prescribed standards of CPCB / SPCB.
- (vi) No storage reservoir for sea water shall be permitted and only pipelines conveyance system shall be installed.
- (vii) Any temporary physical infrastructure setup and excavated material during laying of Pipelines shall not be dumped in water bodies or adjacent areas and the site shall be restored to its original condition after completion of construction of work.
- (viii) No groundwater shall be extracted within the CRZ area to meet the water requirements during the construction and/or operation phase of the project.
- (ix) Permanent labour camp, machinery and material storage shall not be set up in the CRZ area.
- (x) All the conditions stipulated by the Maharashtra Coastal Zone Management Authority for CRZ clearance 2011 *vide* its Letter No. CRZ 2020/CR86/TC4 dated 22/06/2022 and commitments made by the PP before the MCZMA and EAC shall be followed in letter and spirit.
- (xi) All necessary clearance from the concerned authority, as may be applicable should be obtained prior to commencement of project or activity.

PART B - GENERAL CONDITIONS:

- (i). Management of solid waste in accordance with the Solid Waste Management Rules, 2016 shall be strictly implemented.
- (ii). 'Consent to Establish' and /or 'Consent to Operate' shall be obtained from State Pollution Control Board under the provisions of Air (Prevention and Control of Pollution) Act, 1981 and / or the Water (Prevention and Control of Pollution) Act, 1974, as may be applicable.
- (iii). Disposal of muck during construction phase should not create any adverse effect on the neighbouring communities and be disposed taking the necessary precautions for general safety and health aspects of people, only in approved sites with the approval of Competent Authority.
- (iv). All liquid waste arising from the proposed development will be disposed of as per the norms prescribed by Central / State Pollution Control Board. There shall not be any disposal of untreated effluent into the sea / coastal water bodies. It shall be ensured that the wastewater generated is treated in the STP as committed by the project proponent. The treated waste water shall be reused for landscaping, flushing and / or HVAC cooling purposes etc. within the development. The project proponent should also make alternate arrangement for situation arising due to malfunctioning of STP. There shall be regular monitoring of standard parameters of the effluent discharge from STP under intimation to the SPCB.
- (v). Any hazardous waste generated during construction phase, shall be disposed off as per applicable rules and norms with necessary approvals of the State Pollution Control Board.
- (vi). A copy of the clearance letter shall be uploaded on the website of the concerned State Coastal Zone Management Authority / State Pollution Control Board. The Clearance letter shall also be displayed at the Regional Office, District Industries Centre and Collector's Office / Tehsildar's Office for 30 days.

[Handwritten signature]

- (vii). A six-monthly monitoring report shall need to be submitted by the project proponent to the concerned Regional Office of this Ministry regarding the implementation of the stipulated conditions.
 - (viii). The Ministry of Environment, Forest & Climate Change or any other Competent Authority may stipulate any additional conditions or modify the existing ones, if necessary in the interest of environment and the same shall be complied with.
 - (ix). Full co-operation shall be extended to the officials from the Regional Office of MoEF&CC, during monitoring of implementation of environmental safeguards stipulated. It shall be ensured that documents/data sought pertinent is made available to the monitoring team. A complete set of all the documents submitted to MoEF&CC shall be forwarded to the concerned Regional Office of MoEF&CC.
 - (x). In the case of any change(s) in the scope of the project, the project would require a fresh appraisal by this Ministry.
 - (xi). The Ministry reserves the right to add additional safeguard measures subsequently, if considered necessary, and to take action to ensure effective implementation of the suggested safeguard measures in a time bound and satisfactory manner, including revoking of the environment clearance under the provisions of the Environmental (Protection) Act, 1986, for non-compliance.
 - (xii). All other statutory clearances such as the approvals for storage of diesel from Chief Controller of Explosives, Fire Department, Civil Aviation Department, Forest Conservation Act, 1980 and Wildlife (Protection) Act, 1972 etc. shall be obtained, as applicable by project proponent from the respective Competent Authorities.
 - (xiii). The project proponent should advertise in at least two local Newspapers widely circulated in the region, one of which shall be in the vernacular language informing that the project has been accorded CRZ Clearance and copies of clearance letters are available with the State Pollution Control Board (SPCB) and may also be seen on the website of the Ministry of Environment, Forest and Climate Change at <https://parivesh.nic.in/>. The advertisement should be made within Seven days from the date of receipt of the Clearance letter and a copy of the same should be forwarded to the concerned Regional Office of this Ministry.
 - (xiv). A copy of the clearance letter shall be sent by the proponent to concerned Panchayat, Zilla Parishad/Municipal Corporation, Urban Local Body and the Local NGO, if any, from whom suggestions/ representations, if any, were received while processing the proposal.
 - (xv). The proponent shall upload the status of compliance of the stipulated conditions, including results of monitored data on their website and shall update the same periodically. It shall simultaneously be sent to the Regional Office of MoEF&CC, the respective Zonal Office of CPCB and the SPCB.
 - (xvi). The environmental statement for each financial year ending 31st March in Form-V as is mandated to be submitted by the project proponent to the concerned State Pollution Control Board as prescribed under the Environment (Protection) Rules, 1986, as amended subsequently, shall also be put on the website of the project proponent along with the status of compliance of clearance conditions and shall also be sent to the respective Regional Office of the Ministry by e-mail.
6. This Clearance is subject to final order of the Hon'ble Supreme Court of India in the matter of Goa Foundation Vs Union of India in Writ Petition (Civil) No.460 of 2004 as may be applicable to this project.
7. The Ministry reserves the right to stipulate additional conditions, if found necessary at subsequent stages and the project proponent shall implement all the said



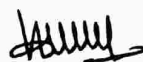
conditions in a time bound manner. The Ministry may revoke or suspend the CRZ clearance, if implementation of any of the above conditions is not found satisfactory.

8. Concealing factual data or submission of false/fabricated data and failure to comply with any of the conditions mentioned above may result in withdrawal of this clearance and attract action under the provisions of the Environment (Protection) Act, 1986.

9. Any appeal against this CRZ clearance shall lie with the National Green Tribunal, if preferred, within a period of 30 days as prescribed under Section 16 of the National Green Tribunal Act, 2010.


10. The above conditions shall be enforced, *inter-alia* under the provisions of the Water (Prevention & Control of Pollution) Act, 1974, the Air (Prevention & Control of Pollution) Act, 1981, the Environment (Protection) Act, 1986, Hazardous and Other Wastes (Management and Transboundary Movement) Rules, 2016 and the Public Liability Insurance Act, 1991 along with their amendments and Rules and any other orders passed by the Hon'ble Supreme Court of India / High Courts and any other Court of Law relating to the subject matter.

11. This issues with approval of the Competent Authority.


(Dr. H. Kharkwal)
Scientist 'E' (CRZ)

Copy to:

1. The Principal Secretary, Environment Department, Government of Maharashtra, Annexe Building, Mantralaya, Mumbai- 400032, Maharashtra.
2. The Deputy DGF (C), MoEF&CC Regional Office(WCZ), Ground Floor, East Wing, New Secretariat Building, Civil Line, Nagpur- 440001, Maharashtra.
3. The Member Secretary, Maharashtra Coastal Zone Management Authority (MCZMA), Environment and Climate Change Department, 15th Floor, New Administrative Building, Mantralaya, Mumbai- 400032, Maharashtra.
4. The Member Secretary, Central Pollution Control Board, Parivesh Bhawan, CBD-cum-Office Complex, East Arjun Nagar, Delhi - 110032.
5. The Member Secretary, Maharashtra Pollution Control Board, Kalpataru Point, 3rd and 4th Floor, Opp. Cine Planet, Sion Circle, Mumbai - 400022, Maharashtra.
6. Guard File / Monitoring File / Website / Record File.


(Dr. H. Kharkwal)
Scientist 'E' (CRZ)

Annexure 10

**Copy of letter submitted to Gram Panchayat for
obtaining the Environmental Clearance as per EC
Conditions**



Dolvi Works : Geetapuram,
Dolvi, Taluka - Pen,
Dist.: Raigad - 402107, Maharashtra, India.
CIN. : L27102MH1994PLC152925
Phone : +91 2143 277501-15
Fax : +91 2143 277533/42
Website : www.jsw.in

जेएसडब्ल्यू / डोलवी ग्रामपंचायत / इसी/२०१५

दिनांक : २९/०८/२०१५.

प्रती,
माननीय सरपंच,
ग्रामपंचायत डोलवी,
ता. पेण, जि रायगड.

विषय : - वन व पर्यावरण मंत्रालय नवी दिल्ली यांचेकडून प्रकल्पविस्तारास पर्यावरणाचा ना हरकत प्रमाणपत्र प्राप्त झाल्याचे कळविणेबाबत.

महोदया,

जेएसडब्ल्यू स्टील लिमिटेड डोलवी, ता. पेण, जि. रायगड या प्रकल्पाला भारत सरकार पर्यावरण, वन आणि क्लायमेट चेंज मंत्रालय (आय. ए. विभाग), पर्यावरण भवन, जोर बाग रोड, अली गंज, नवी दिल्ली ११० ००३ यांच्याकडून दिनांक २५.०८.२०१५ रोजी एकीकृत लोह उत्पादन क्षमता पाच मेट्रीक टन प्रतिवर्षापासून दहा मेट्रीक टन विस्तारासहीत आणि ३०० मेगावॅट पासून ६०० मेगावॅट वायु आधारित ऊर्जा प्रकल्प विस्तारास पर्यावरणाचा नाहरकत प्रमाणपत्र प्राप्त झाले आहे.

सदरच्या प्रमाणपत्राची प्रत पर्यावरण, वन आणि क्लायमेट चेंज मंत्रालयामध्ये व त्यांच्या <http://moef.nic.in> या संकेत स्थळावर आणि महाराष्ट्र प्रदुषण नियंत्रण मंडळाकडे व कंपनीच्या www.jsw.in या संकेत स्थळावर पाहण्यासाठी उपलब्ध आहे.

सदरील नाहरकत प्रमाणपत्राची प्रत आपल्या माहितीसाठी सोबत सादर करीत आहोत.

माननीयांस सविनय सादर.

आपला आभारी
जेएसडब्ल्यू स्टील लिमिटेड डोलवी करीता

अरुण महादेव शिर्के
डेप्युटी जनरल मॅनेजर (प्रशासन)

सोबत - नाहरकत प्रमाणपत्राची प्रत



Part of O. P. Jindal Group

प्रत मिळाली
लेखनिक 31/08/2015 4:05 PM
ग्रामपंचायत, डोलवी, ता. पेण

Regd. Office : JSW Centre,
Bandra Kurla Complex,
Bandra (East), Mumbai - 400 051
Phone : +91 22 4286 1000
Fax : +91 22 4286 3000

Annexure 11

**Screenshot of EC Copy attached on the JSW Company
Website**



Company Products Projects Facilities JSW Shoppe JSW MI Blogs Sustainability CSR Digital Transformation

JSW Nuagaon Mine EC Compliance Report Dec 2021 with annexures	Download
JSW Narayanpeshi Mine EC Compliance Report Dec 2021 with annexures	Download
JSW Goma Mine EC Compliance Report Dec 2021 with annexures	Download
JSW Nuagaon Mine Environment Clearance dated 05.06.2021	Download
Environmental clearance for Coke oven Plant -II	Download
JSW Steel Ltd. Salem works - Bio Medical Waste - Monthly Register -Till Oct 2021	Download
Annual report of the Bio Medical Waste to FY2021	Download
JSW Steel Salem Works HTR for Jan 21 to June 2021	Download
JSW Steel Ltd, CPP II, Salem works Fly ash stock details up to the month August 2021	Download
JSW Steel Salem works CPPII Fly ash stock details till July 2021	Download

JSW Steel Ltd. Salem works, CPP II Fly ash stock details up to the month August 2021

Annexure 12

**Mail Copy of last six monthly EC Compliance report
submitted to MoEFCC**

Six Monthly **EC** Compliance report and Monitoring report of M/s Amba River Coke Ltd., Dolvi, Raigad District, Maharashtra.



Anand Kumar Rai

To: ecompliance-mh@gov.in

Cc: RD Raigad <roraigad@mpcb.gov.in>; SRO RAIGAD2 <sroraigad2@mpcb.gov.in>; westzonecpb@yahoo.com

🗨️ ↩️ Reply ↩️ Reply all ➡️ Forward 🛡️ 📧 ...

Sat 6/1/2024 11:26 PM

🕒 You forwarded this message on Thu 6/6/2024 1:35 PM.



3 attachments (6 MB) 📁 Save all to OneDrive - ISW 📄 Download all

Respected Sir,

Please find attached files for the following six monthly **EC** compliance reports (October 2023 to March 2024) for M/s. Amba River Coke Ltd., Dolvi, Taluka - Pen, District - Raigad, Maharashtra

1. Six monthly **EC** Compliance reports (October 2023 to March 2024) for Coke Oven Plant (1 MTPA) at Amba River Coke Ltd., Dolvi
2. Six monthly **EC** Compliance reports (October 2023 to March 2024) for Pellet Plant (4 MTPA) at Amba River Coke Ltd., Dolvi
3. Six monthly Environment Monitoring reports for plants under Amba River Coke Ltd, Dolvi (Coke Oven Plant (1 MTPA) and Pellet Plant (4 MTPA) from October 2023 to March 2024

Submitted for kind information and record please.

Thanks & Regards,

Dr Anand Rai
Vice President (Head - Environment)
For Amba River Coke Ltd., Dolvi

Activate Windows
Go to Settings to activate Windows.

Annexure 13

**Copy of Advertisement in local newspapers as per the
EC Conditions**

•Annexure- 13

Date - 1-09-2015



JSW Steel Limited
 Date Works / Geetapuram,
 Durg, India - 491 001
 Dist. Raipur - 491 001
 Maharashtra, India
 Ctn. 121 10034188811100000
 Phone : +91 2143 271311-13
 Fax : +91 2143 271311-13
 Website : www.jsw.in

PUBLIC NOTICE

Government of India, Ministry of Environment, Forest and Climate Change (I. A. Division), Indira Paryavaran Bhawan, Jor Bagh Road, Ali Garh, New Delhi - 110003 has accorded Environmental Clearance for Expansion of Integrated Steel Plant from 5 MTPA to 10 MTPA and Power Plant from 300 MW to 600 MW (Gas Based) to M/s. JSW Steel Ltd. at Geetapuram, Village Doivi, Tehsil Pen, District Raigad in Maharashtra on 25th August, 2015.


The copy of this Environmental Clearance Letter is available with Maharashtra Pollution Control Board (MPCB) and at website of Ministry of Environment, Forest and Climate Change at <http://moef.nic.in> and company website www.jsw.in.

Sd/-
M/s. JSW Steel Ltd.
Geetapuram, Village Doivi,
Tehsil - Pen, District Raigad,
Maharashtra - 402 107

Place : Delhi
Date : 27/08/2015

Regd. Office: JSW Corpn., E-20, Kirti Complex, Connaught Place,
Mumbai - 400018. Phone : +91 22 688 1000

The Indian EXPRESS Tue, 01 September 2015
 paper edition : indianexpress.com



PUBLIC NOTICE

Government of India, Ministry of Environment, Forest and Climate Change (I.A. Division), Indira Paryavaran Bhawan, Jor Bagh Road, Ali Garh, New Delhi-110003 has accorded Environmental Clearance for Expansion of Integrated Steel Plant from 5 MTPA to 10 MTPA and Power Plant from 300 MW to 600 MW (Gas Based) to M/s JSW Steel Ltd. at Geetapuram, Village Doivi, Tehsil Pen, District Raigad in Maharashtra on 25th August, 2015.

The copy of this Environmental Clearance Letter is available with Maharashtra Pollution Control Board (MPCB) and at website of Ministry of Environment, Forest and Climate Change at <http://moef.nic.in> and company website www.jsw.in

Place : Doivi
Date : 27/08/2015

M/s. JSW Steel Ltd.
 Geetapuram, Village Doivi,
 Tehsil-Pen, Dist- Raigad,
 Maharashtra-402 107



जाहीर सूचना

भारत सरकार, पर्यावरण, वन आणि क्लायमेट चेंज मंत्रालय (आय र विभाग), पर्यावरण भवन, जोर बाग रोड, अली गंज, नवी दिल्ली ११०००३ यांच्याकडून मे. जे.एस.डब्ल्यू. स्टील लिमिटेड, गीतापुरम ग्राम डोळवी, ता. पेण, जि. रायगड, महाराष्ट्र यांना दि. २५.०८.२०१५ रोजी एकीकृत लोह उत्पादन क्षमता पाच मेगटॉन टन प्रतिवर्षापासून दहा मेगटॉन टन निरस्तारक्षित आणि ३०० मेगटॉनपासून ६०० मेगटॉन वायू आधारित ऊर्जा प्रकल्प विस्तारास पर्यावरणाचे नाहकतेचे प्रमाणपत्र प्राप्त झाले आहे.

सदरच्या प्रमाणपत्राची प्रत पर्यावरण, वन आणि क्लायमेट चेंज मंत्रालयाच्या वेबसाइट <http://moef.nic.in> या संकेत स्थळावर आणि महाराष्ट्र प्रदूषण नियंत्रण मंडळाकडे व कंपनीच्या www.jsw.in या संकेत स्थळावर पाहण्यासाठी उपलब्ध आहे.

स्थळ : डोळवी
दिनांक : २७.०८.२०१५

मे. जे.एस.डब्ल्यू. स्टील लिमिटेड,
 गीतापुरम, ग्राम-डोळवी,
 ता. पेण, जि. रायगड,
 महाराष्ट्र ४०२ १०७.

Copy of newspaper publication for EC